

# Pork Tapeworm (Xhosa), South Africa

## MASIQHAWULE UMJIKELO WENTSHULUBE YEHAGU

ngokusebenzisa lamanyathelo mathandathu alula alandelayo

### 6. Phekisisa inyama ngokugqibeleleyo.

Kungcono ukuthuleka kuncuzisoda. Inyama yehagu mayiphekiswe kungabiko mbala uphiki ragasi lphumayo. Ngoko hlobo amagxaku (cysts) entshulube yehagu ayafika kwaye kunginika indawo yokuba.



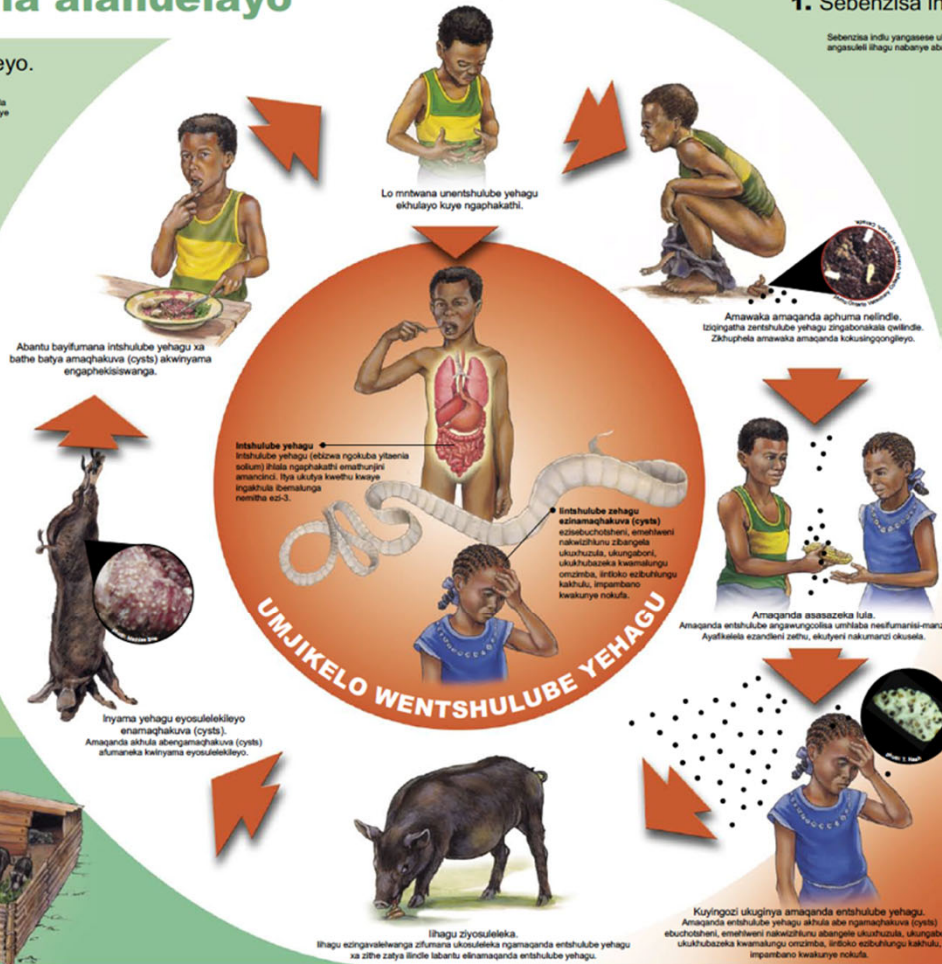
### 5. Hlola ukuba inyama ilungile.

Hlola inyama ngononophelo ukugqibelela ukuba ayinamagxaku (cysts). Inyama enamagxaku (cysts) ayifanelekanga ukuba iyive okanye ihlangwe.



### 4. Nqanda ihagu zingazuli.

Gcina ihagu zakho zivalelwe ebusini okanye zibothelwe esibondeni ukuze zingabi nakutya lindle labantu ekhaya ngandentshulube yehagu.



© Kivuti and Kinoti cc, International Livestock Research Institute and Medical Research Council (2020)  
Revised by Barry Jackson and designed by Carl Lane.